



Integrated ICT Learning Unit

Volume 5-7

Achoo do you have the Ebola virus?

Aaachoo...

Fever
A very high temperature of over 38° is dangerous

Nausea
If you are feeling nauseous it could mean you that you have flu

Vomiting
This is how germs are removed from the body. You should stay away from other people if you are vomiting.

Lethargy
If you are feeling tired and sleepy all the time it is a sign that you are not well

Sneezing
If you are sneezing a lot make sure you are using a tissue

Do you have the Ebola virus?

Name:

Grade: www.computers4kids.co.za

The logo for 'Computers 4 Kids' is repeated in the bottom right corner of the worksheet.

Overview

This integrated leT learning unit consists of one activity which explores the concept of the Ebola virus symptoms.

Lesson format:

10 minutes	Educational game (optional; at the discretion of the teacher)
5 minutes	"Tech Talk" which introduces leT terminology
5 minutes	Mouse skills which develop essential mouse and keyboard/touch typing techniques
20 minutes+	Integrated activity involving tasks, which relate to relevant content being covered in the classroom

ICT applications used in this Learning Unit:

Word Processing	Graphics	Spreadsheets	Databases	Internet	E-mail	Presentations	Drawing	Web design	Information Organiser	Simulations & design	Desktop Publishing	Operating Systems	Programming & logic
√	√											√	

Structure of the Learning Unit:

Integrated Activity

This lesson is aimed at integrating leT into current, relevant class curriculum. Using this approach enables learners to use the computer not only as a working tool but also as a relevant learning tool to learn new concepts and skills or consolidate previously learnt work. This activity will take between 20 - 60 minutes (or 1-3 lessons) to complete depending on the ability of the learners and the time available.

STRUCTURE OF LESSON

AACHOO DO YOU HAVE THE EBOLA VIRUS?

INTEGRATED LESSON	
Prior Learning Requirements	
Concept / Topic: Basic knowledge of the Ebola virus symptoms	
ICT Skills: Entering text in a textboxes; inserting image	
Educational Game	10 Min
A suitable educational game, as per Appendix A, may be used as an optional activity at any point during the course of the lesson at the discretion of the ICT or class teacher	
Keyboard / Mouse Skills	5 Min
Ensure continuity and progression as per Appendix B	
Tech Talk	5 Min
TEXTBOX	
This is a box that you insert into a document where you add text. You can then format the text, change the shape, colour and size of the font etc.	
Integrated Activity	20 Min
Learners identify the Ebola virus symptoms and describe them with text and images.	
Resources Used	
Software: Microsoft Word	
Prerequisite: Flu Pictures	
Template: Aachoo.doc	
WWW: None	
Subjects	
<ul style="list-style-type: none"> • English Language • Life Skills 	
Additional Learning Opportunities	
Concept / Topic: 6.5 The Body 7.11 HIV AIDS	
ICT Skills: 6.5 The Body 7.1 Responsibilities	
Beyond the ICT Centre	
<ul style="list-style-type: none"> • Let learners collect useful items which can be distributed at a hospice or children's hospital. • Let children bring a box to school, decorate it as they wish and fill it with tissues so that each learner has access to tissues when required. 	

Learner name:	Class:	
Integrated Activity: Learners identify the Ebola virus symptoms and describe them with text and images.		
Theme/Topic: Aachoo do you have the Ebola virus?	Integrated Activity	
e-Learner Skills	Practice	Assess
Unit 2 - Files and Folders		
2.2.1 Right / Left click mouse		
2.2.2 Single / Double click mouse		
2.3.1 Alpha / numeric keys		
2.3.2 Special Keys (Ctrl / Alt / Shift / Caps / Space etc)		
2.3.3 Cursor Keys		
2.5.1 Using Shortcuts		
2.5.2 Using Start Menu		
2.6.1 Maximise / Minimise		
2.7.1 Navigating through folders / Folder structure		
2.7.3 Navigating within a file (scrollbar / hyperlinks)		
2.7.4 Opening Files		
2.7.5 Saving Files		
2.7.6 Closing Files		
4 = Exceeded Requirements 3 = Satisfied Requirements 2 = Partially Satisfied Requirements 1 = Has Not Satisfied Requirements		

Learner name:	Class:	
Integrated Activity: Learners identify the Ebola virus symptoms and describe them with text and images.		
Theme/Topic: Aachoo do you have the Ebola virus?	Integrated Activity	
e-Learner Skills	Practice	Assess
Unit 4 – Word Processing		
4.1 Open programme		
4.2.2 Opening document		
4.3.1 Insert text		
4.3.2 Format Text (font face/ colour / size / bold / underline)		
4.5.1 Insert graphics		
4.5.2 Format graphics		
4.5.3 Move graphics		
4.5.4 Resize graphics		
4.6.1 Insert text boxes		
4.6.2 Type text into text boxes		
4.6.3 Move text boxes		
4.6.4 Resize text boxes		
4.6.5 Copy / Paste text boxes		
4.8 Save		
4.9 Print Preview		
4.10 Print		
4.11 Exit		
4 = Exceeded Requirements 3 = Satisfied Requirements 2 = Partially Satisfied Requirements 1 = Has Not Satisfied Requirements		



INTEGRATED ACTIVITY

In order to promote relevant discussion, the following questions are posed by the educator to the learners:

- What are some of the symptoms of flu?
- If not all the symptoms are present does it mean you do not have flu?
- Can a person die from flu if they do not take care of themselves?

A short discussion takes place about the symptoms of flu and how different types of flu may present different symptoms. When one is ill it is best to stay away from other people in case you pass on the germs to them as well. If one has a temperature it is always advisable to stay indoors until your temperature has

Note to educator: This task requires the template as well as the folder of images and various other informative resources.

Task: Today we are going to create an informative document which will identify at least five of the symptoms and warning signs of flu.

1. Double click on the template. The file which opens looks like this:
2. Save your document into your digital portfolio → **File → Save As → locate your portfolio → double click → type a suitable name in the file name box → Save**
3. **Minimise** the Word document by clicking on the small "-" sign at the top right hand corner of the page. Locate and read through the information and view the graphic which outline the symptoms of flu.



4. **Note to the educator:** Once the learners have read through the material it may be useful to discuss and list some of the symptoms of the Ebola virus:

- high fever
- cough
- sore throat
- headache
- limb or joint pain
- runny nose
- diarrhoea
- vomiting
- nausea
- lethargy
- lack of appetite

5. **Maximise** your Word document. We will need to

insert images and text onto this page which outline the symptoms of flu. Appropriate images

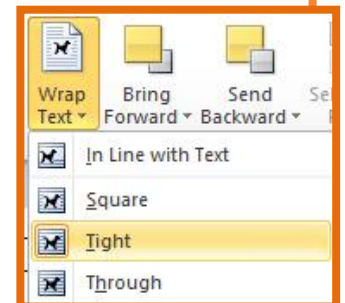
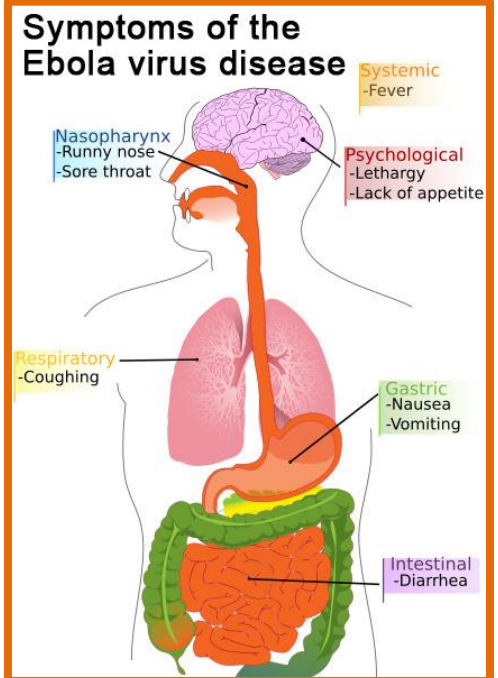
have been saved for you in the "Images" folder.

6. To insert an image click on **Insert Ribbon** → **Picture** → **navigate to the folder containing the flu images** → **select the required image** → **Insert**. Your picture will appear on the page but you will need to format it before you can move it or resize it. (These images can be found under the **Pix Linx**)

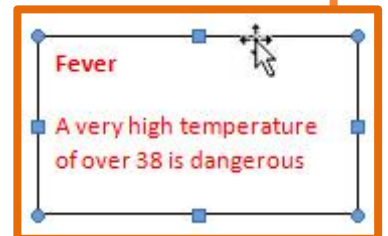
7. **Select the picture** → **Format Ribbon** → **Wrap Text** → **Tight**

8. You will now be able to move your image into position in the centre of your page. You may also resize your image if you wish.

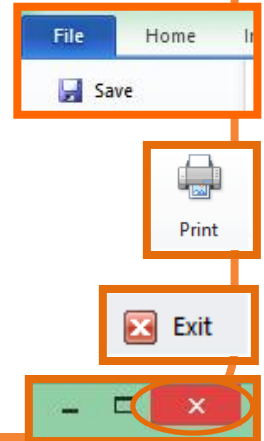
9. Click on the image. Adjustment handles will be visible around the outside of the image. Click on one of the adjustment handles at the corner of the image and drag it inwards to make the image small or outwards to make the image larger.



10. We will now have to insert a textbox below this image which will hold the text describing the symptom that the image is portraying.
11. Click on the **Insert Ribbon** → **Text Box**. The Text Box will automatically appear on your page. Enter your text into the textbox (eg: Fever - a very high temperature of over 38° is dangerous)
12. Format the font within the textbox by highlighting the text and clicking on **Home Ribbon** → **Font tab** → **Font tab** → **Select a font face** → **style** → **size** → **colour**
13. We will now need to move the textbox into position next to the image we have inserted. Move your cursor over the border of the textbox.
14. Your cursor will change into a four-headed arrow shape. Click and hold the left mouse button down and drag the textbox into position next to the next to the inserted image. You may change the size of the textbox using the adjustment handles in the same way as you changed the size of the image.
15. You should now have one inserted image and a textbox containing some explanatory text on your page. You will need to insert more images and textboxes in a similar way. If you need you need to refer back to the reference material you may minimise your document and continue your research.
16. Once you have inserted images and descriptions for at least 5 flu symptoms.
17. Enter your name and grade in the appropriate places.

Name: Grade: www.computers4kids.co.za

18. Click in the box next to "Name" and enter your name. Click in the box next to "Grade" and enter your grade.
19. Save your work by clicking on **File** → **Save**
20. **Click on File** → **Print** → a print preview will appear in the right **hand panel**. Ensure that it all fits neatly onto a single page.
21. Print your work → **File** → **Print** → **Print button**
22. Close Microsoft Word by clicking on **File** → **Exit** or clicking on the top **"X"** at the top right hand corner of the screen.



Aaachoo.....



Fever
A very high temperature of over 38° is dangerous



Nausea
If you are feeling nauseous it could mean you that you have flu



Vomiting
This is how germs are removed from the body. You should stay away from other people if you are vomiting.



Lethargy
If you are feeling tired and sleepy all the time it is a sign that you are not well

Sneezing
If you are sneezing a lot make sure you are using a tissue



Do you have the Ebola virus?

Name:

Grade: www.computers4kids.co.za



